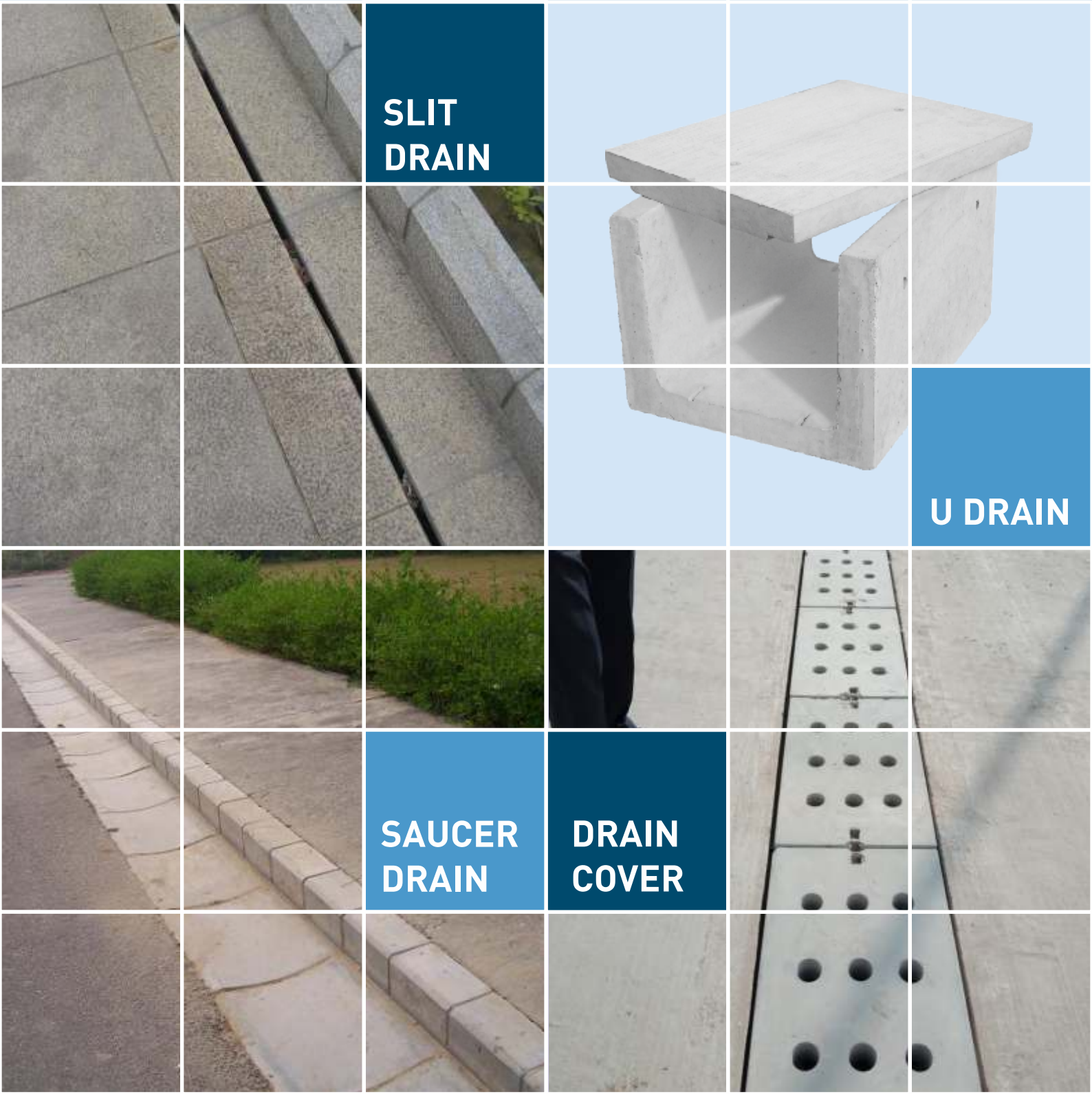




*“Home of Innovative & Quality
Solutions for Construction
since 1984”*

STORM WATER DRAINAGE

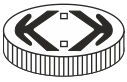


**SLIT
DRAIN**

U DRAIN

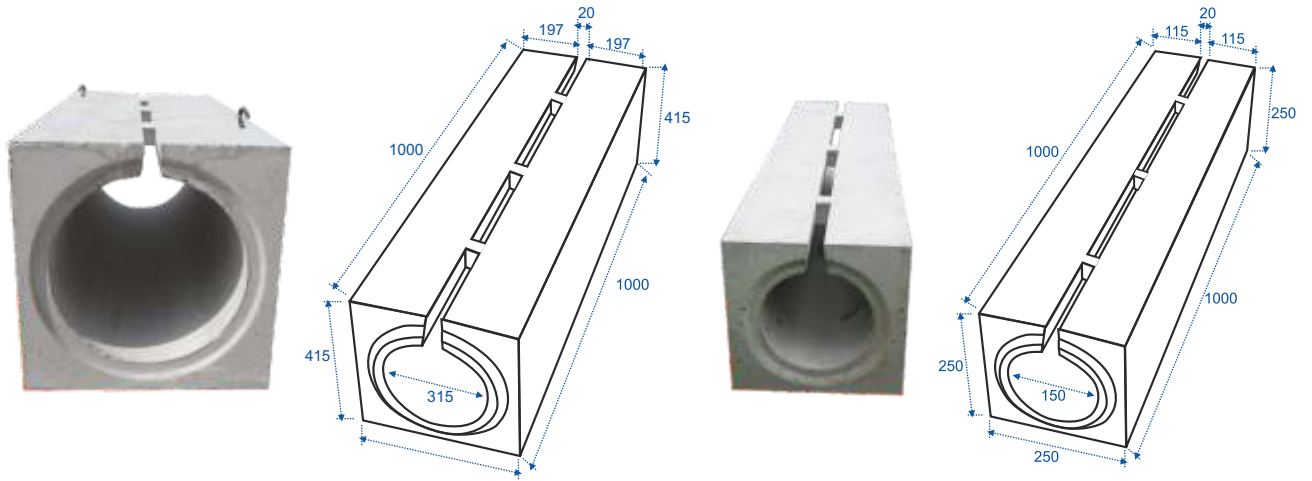
**SAUCER
DRAIN**

**DRAIN
COVER**



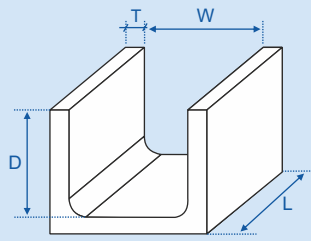
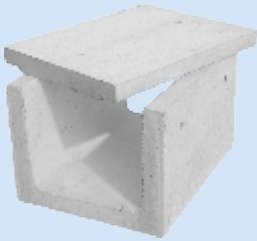
STORM WATER DRAINAGE

SLIT DRAIN SYSTEM



Product Code	Width	Length	Pipe Dia
SLIT-01	250	1000	150
SLIT-02	415	1000	315

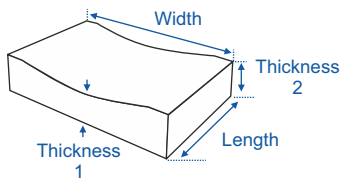
U-DRAIN



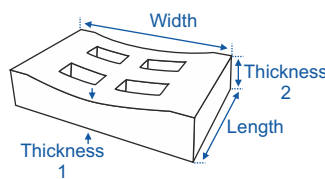
Product Code	W	D	T	L
DR-01	300	300	50	500
DR-02	300	375	50	500
DR-03	300	450	50	500
DR-04	355/340	315	60/65	610
DR-05	585/610	310	50/70	610
DR-06	705/675	355	57/80	475
DR-07	855/890	300	110/80	500

SAUCER DRAIN

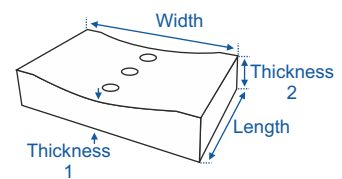
Saucer Drain (Plain)



Saucer Drain (Perforated) Type A



Saucer Drain (Perforated) Type B

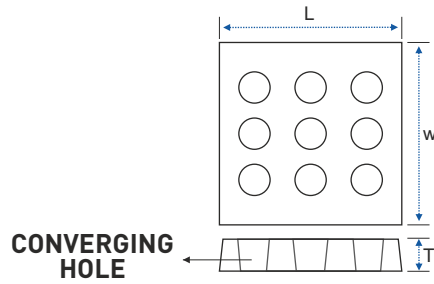


Product Code	Width	Length	Thickness ₁	Thickness ₂	Description
SD-01	450	300	75	100	Plain
SD-01H	450	300	75	100	Perforated Type A
SD-02	450	600	75	100	Plain
SD-02H	450	600	75	100	Perforated Type B
SD-03	600	450	75	100	Plain
SD-03H	600	450	75	100	Perforated Type B
SD-04	300	300	75	100	Plain
SD-05	300	600	75	100	Plain
SD-05H	300	600	75	100	Perforated Type B
SD-06	300	900	75	100	Plain
SD-06H	300	900	75	100	Perforated Type B
SD-07	300	900	50	75	Plain
Saucer Drain with Frame	Clear Opening : 500x350 Frame Thickness: 150			Cover + Frame	



STORM WATER DRAINAGE

DRAIN/TRENCH COVER



SPECIFICATION

- M - 30 grade of concrete.
- Suitable draft angles provided for ease of demoulding.
- Holes if provided can be converging or diverging based on requirement.
- Lifting hooks can be provided.
- Tolerance
Thickness : $\pm 2\text{mm}$
Length & width : $\pm 10\text{mm}$
- Suitably reinforced based on load requirement.



L (LENGTH)	W (WIDTH)	T (THICKNESS)
500	400	50
500	400	60
500	400	70
500	430	70
550	300	60
600	300	50
600	300	60
600	300	70
600	300	100
600	400	60
600	400	65
600	400	70
600	450	60
600	450	70
600	450	80
600	450	88
600	450	100
600	550	60
600	550	70
600	550	90
600	550	60
600	600	100

L (LENGTH)	W (WIDTH)	T (THICKNESS)
650	600	60
660	380	75
710	610	75
710	610	200
750	600	70
750	600	90
800	400	70
800	500	100
900	400	70
900	450	50
900	450	70
900	450	90
900	600	100
977	475	270
1100	550	75
1150	400	100
1200	450	60
1200	600	100
1500	300	70
1500	760	100

All Dimensions are in "mm"

* THICKNESS CAN BE INCREASED FURTHER TO ACCOMMODATE GREATER LOADS.



STORM WATER DRAINAGE

